

241 Deansgate, Manchester, Lancashire, M3 4EL
Tel: 0161 637 8336
Email: contactus@ascendproperties.com
www.ascendproperties.com

Ascend

Built on higher standards



New Cross Central, Addington Street, Manchester

£2,250 PCM

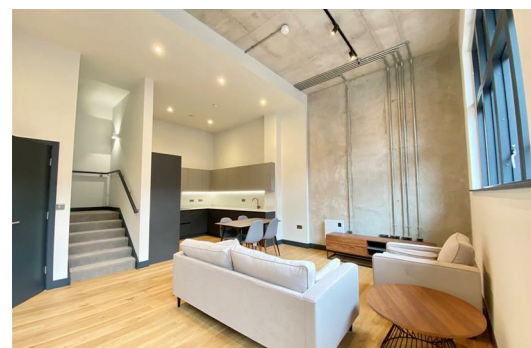
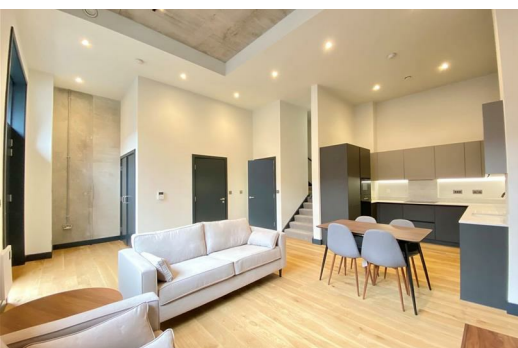
This is your chance to live in a stunning three-bedroom townhouse style apartment in a forward-thinking neighbourhood full of personality and individuality. A place to really make your mark on the city!

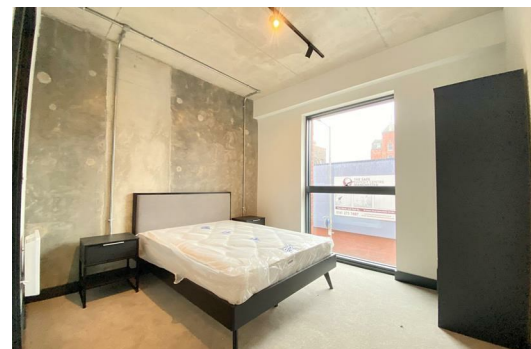
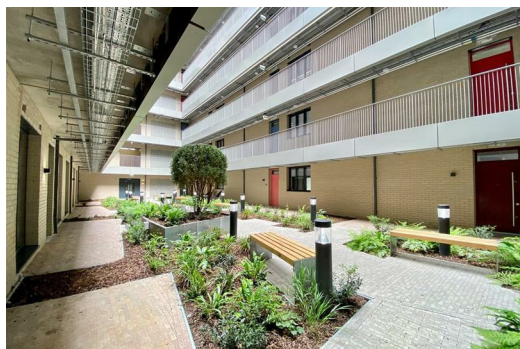
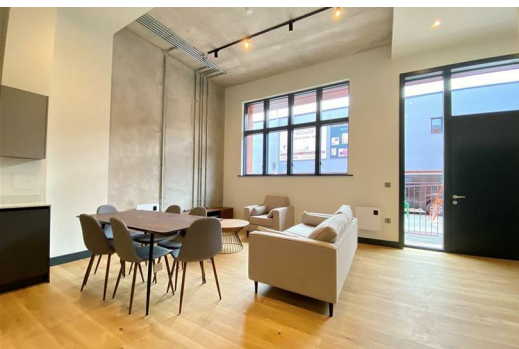
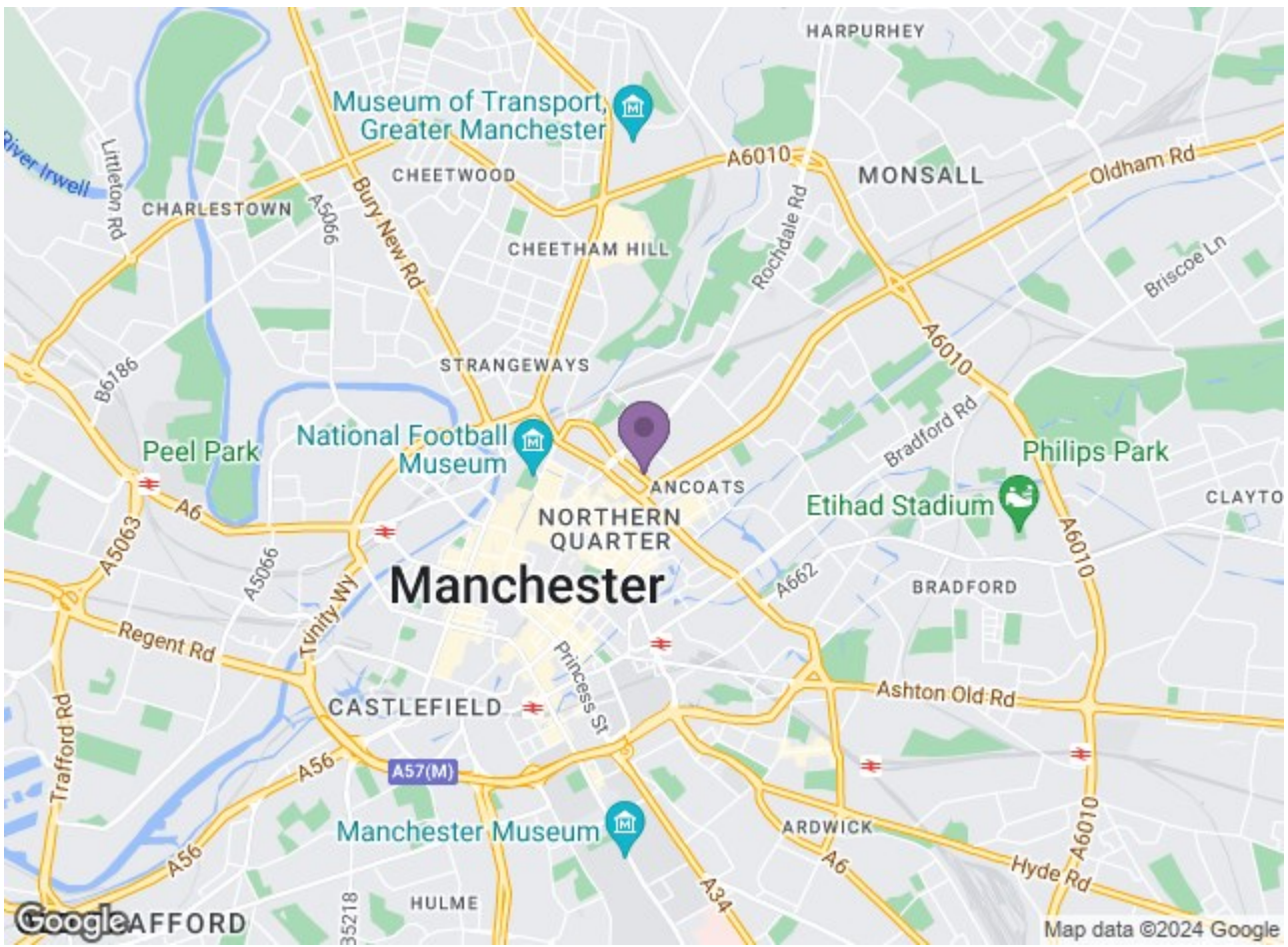
Located at the centre of an up-and-coming, exciting quarter of Manchester. Far enough away from the hustle and bustle of the centre but only a 10-minute walk away from Manchester's major travel routes and only a 5-minute walk to the Northern Quarter, from there, you're spoilt for choice with independent shops, restaurants, and bars to pick from.

This New Cross Central apartment blends ultra-modern style and raw beauty, with a combination of exposed concrete walls and high-quality interior finishes, including gorgeous wood floors and natural quartz worktops. The bathrooms feature crafted wall tiling and brass taps.

With its stunning interiors, spacious living areas and a fantastic location, this apartment is guaranteed to be extremely popular! If you are interested in having a closer look or have any questions, don't hesitate to get in touch.

Available 16th September 2024
12 month tenancy.
Furnished.
Deposit £2,590
Council Tax D.





Energy Efficiency Rating		Environmental Impact (CO ₂) Rating	
Current	Target	Current	Target
England & Wales		England & Wales	